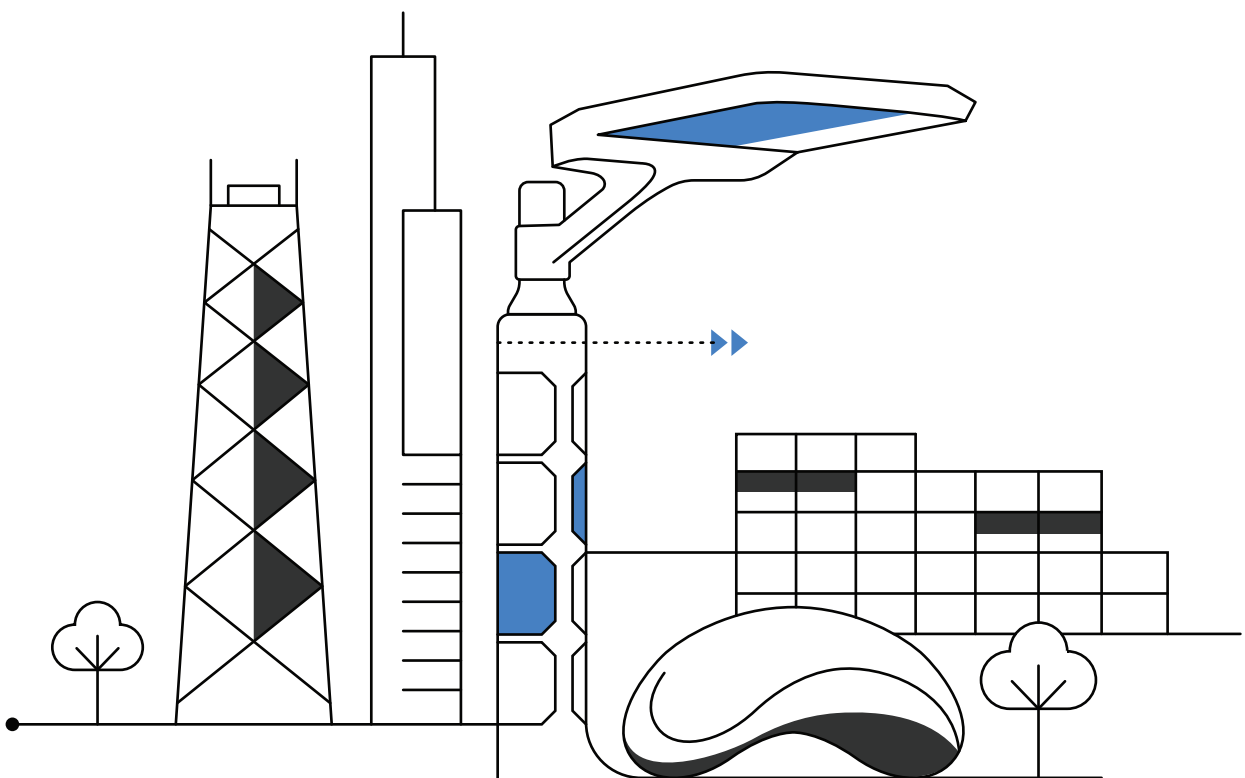


---

# Lombard, Meet iLamp Illinois



Prepared for:  
Lombard, Illinois



## Lombard, Meet iLamp

**iLamp is a smart streetlight proven to reduce crime and save lives**, self powered and self sufficient, iLamp is easy to install, robust and reliable. iLamp is always on, immune to power cuts and grid outages, providing a sustainable energy solution. When everything else goes down, iLamp stays up.

But it's more than just a light, it's a power source, a community asset, and a step towards energy independence. Resistant to sand, snow, dirt, water, and floods, its innovative cylindrical solar panel cleans itself, ensuring continuous power generation in any environment.

As a modular system iLamp is a platform for innovation, enabling developers to create plug and play modules that use iLamp's sensors and communications for advanced functionalities.

Each add-on pays for its space and resources used, creating a marketplace of capabilities. Software developers can submit apps to the iLamp App Store, leveraging its onboard senses to deliver services ranging from environmental monitoring to public safety.

---

Modules are billed for the power and onboard services such as data transmission and sensor access, creating an ecosystem where energy and functionality come together seamlessly. With this proven smart streetlight solution, iLamp Illinois is uniquely positioned to address the broader challenges faced by Lombard.

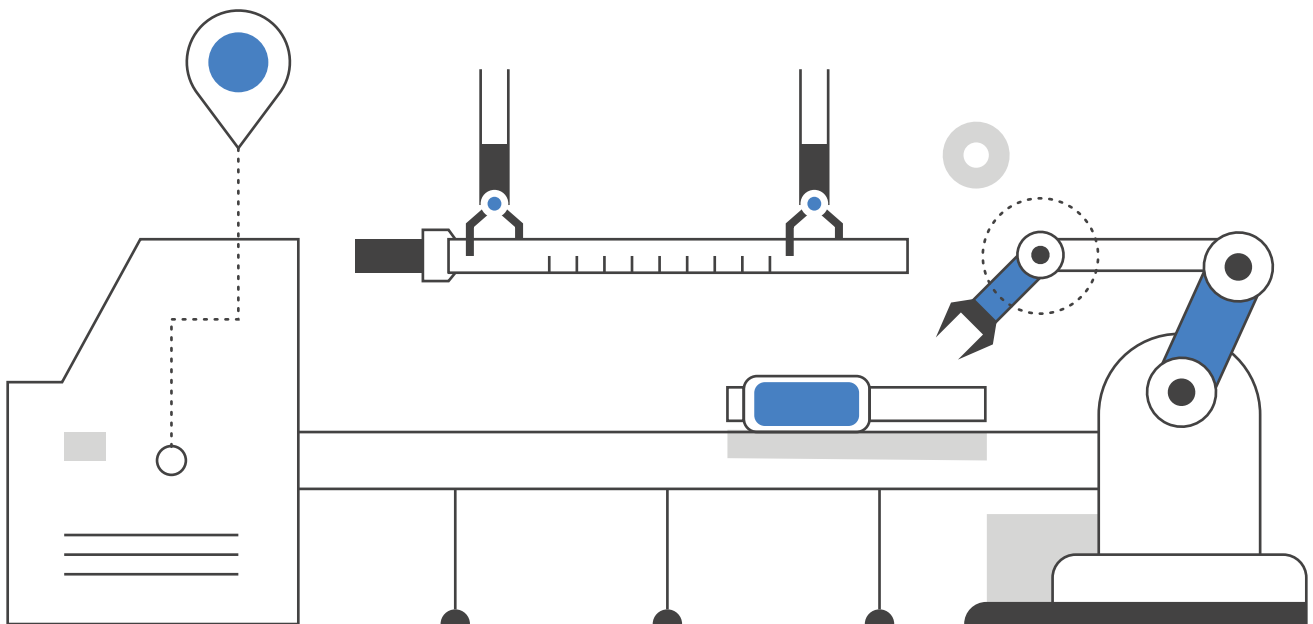
With the potential to reduce crime, improve safety, increase house prices and create economic opportunities, iLamp fosters a positive feedback loop of community benefits. Its partnerships with diverse local stakeholders such as property developers, public works contractors, community leaders, and local consultants, ensure that each iLamp is a perfect fit for the community it serves, enhancing the vibrancy and sustainability of cities around the globe.

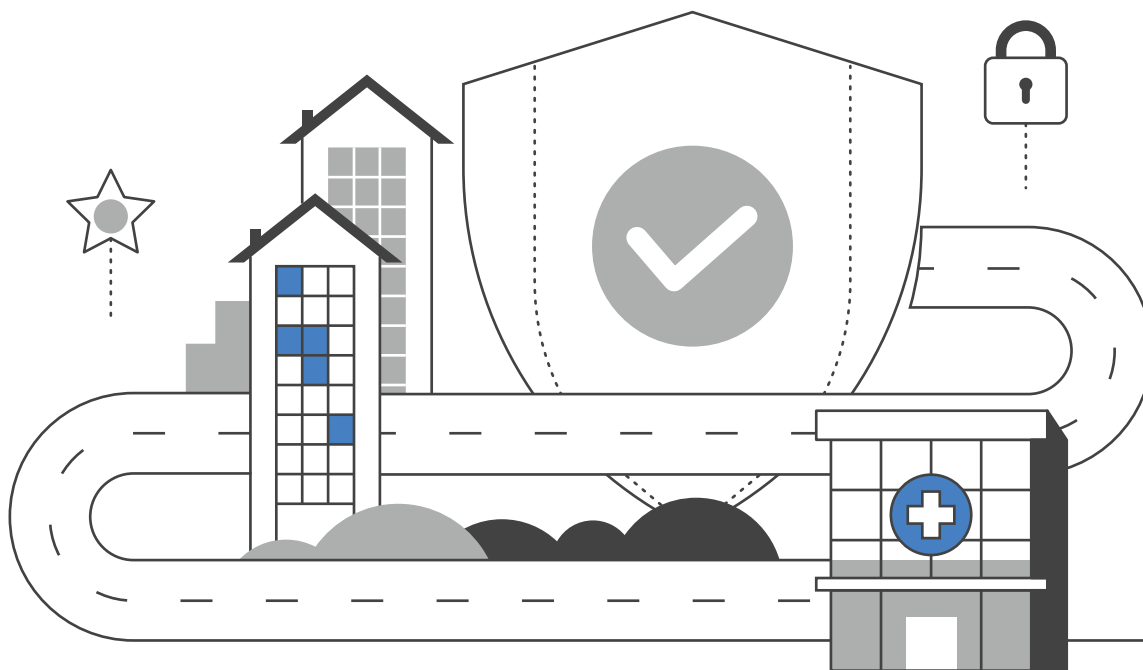


---

**iLamp is constructed in local Micro Factories,** iLamp Illinois provides the blueprint to develop these microfactories, creating local jobs and fostering economic growth at a local level.

Designed to produce high mix, low volume lamps, allow for the customisation of streetlights that fit the specific requirements of each community. This flexibility ensures that iLamps are not just functional but also align with the unique character and needs of Lombard.





## Lombard Crime Re- duction

Lombard, Illinois, stands as one of the safest places in the country, with a crime rate lower than 87% of all cities and towns in the United States. In Illinois, only about 18% of communities have a crime rate lower than Lombard's, making it an ideal suburban community for families, businesses, and investors alike.

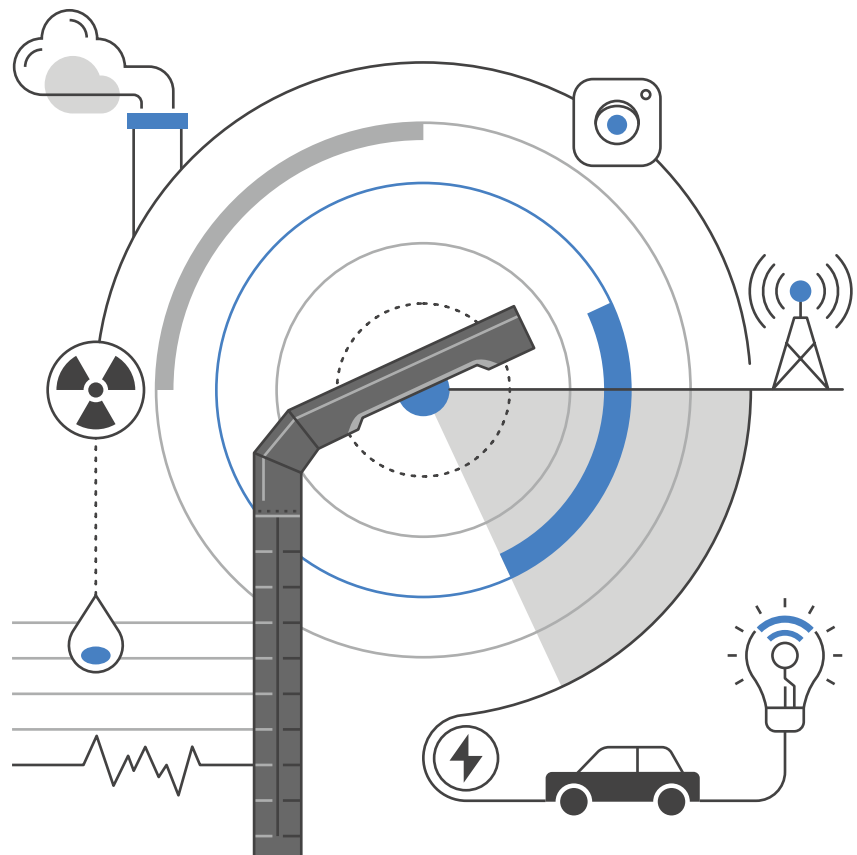
While Lombard has achieved impressive safety rankings, it's crucial to stay proactive in maintaining and even enhancing this sense of security. Installing iLamp, a smart streetlight system certified by the Enhanced Lighting Standard, could be an important step toward further reducing crime and enhancing public safety. With the ability to decrease crime by up to 40%, iLamp offers Lombard the opportunity to build on its safety successes and address any potential vulnerabilities before they emerge.

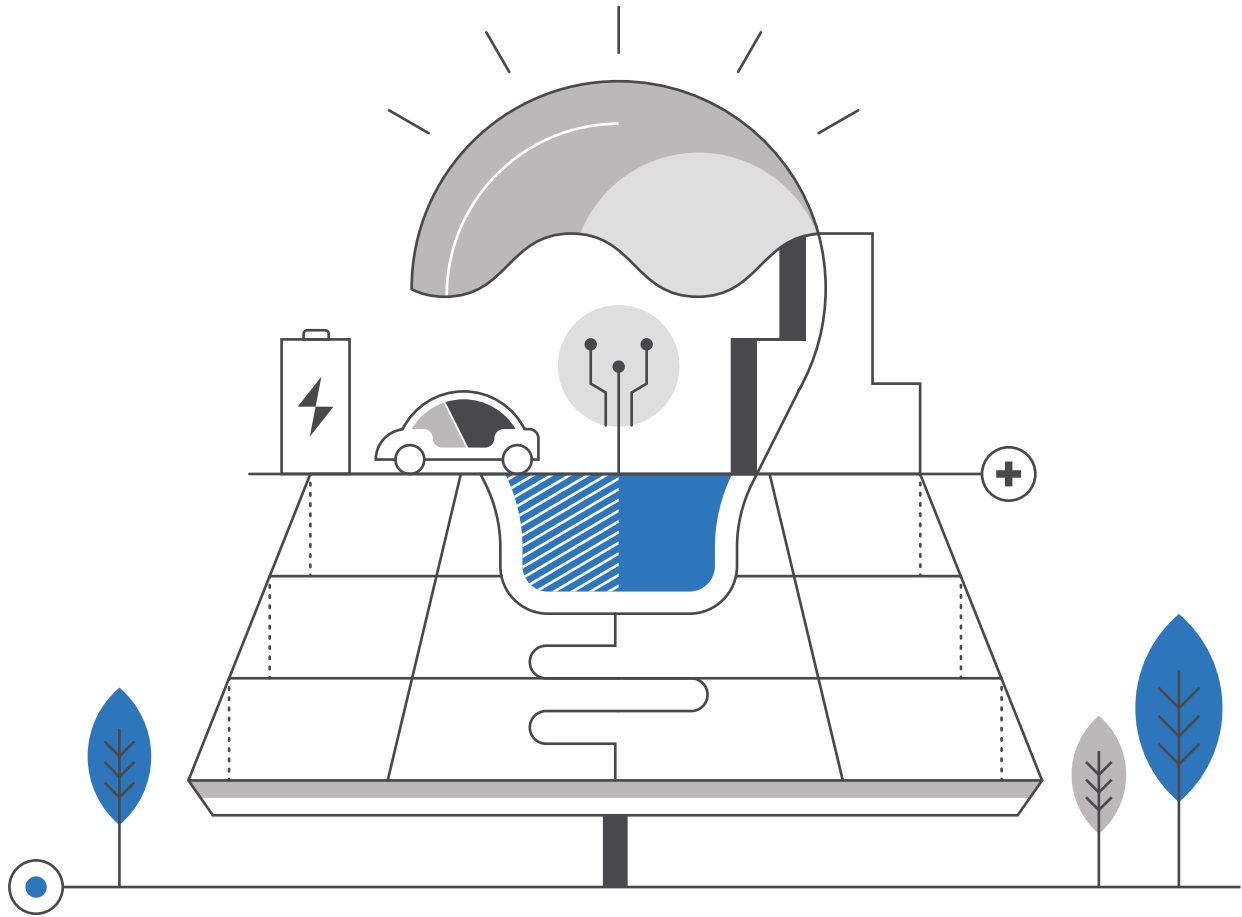
iLamp's advanced street lighting technology can deter criminal activities like burglary, theft, and vandalism, making public areas less appealing for potential offenders. Research shows that well-lit streets discourage crime by increasing visibility,

---

which limits offenders' cover and enhances the performance of law enforcement and surveillance systems. For every 1% reduction in crime, property values rise by 0.5% to 1%, which could enhance Lombard's already thriving real estate market and make it an even more attractive place to live and invest.

iLamp integrates seamlessly with smart city solutions, including CCTV and surveillance technologies. Enhanced lighting improves video clarity, aiding law enforcement in their work and enabling quicker response times in high-traffic areas. This smart integration supports police efforts, keeping Lombard's crime rate low and helping to ensure long term community safety.





## iLamp Illinois Road Safety

iLamp offers transformative benefits for road safety in Lombard, a suburb where traffic congestion, severe weather, and ongoing construction create challenging driving conditions. In recent years, Lombard saw two fatal accidents involving five individuals, highlighting the need for enhanced safety measures. iLamp's advanced lighting solutions can play a critical role in reducing such incidents and making streets safer for all road users.

Fatalities and severe accidents are 58% more likely to occur on poorly lit roads, and Lombard's high-traffic corridors would greatly benefit from iLamp's optimal lighting during low-light hours and adverse weather conditions. The smart system adapts to changing visibility needs, reducing accident risks caused by rain, snow, or fog.

---

Beyond lighting, iLamp's modular camera and comms systems can monitor traffic patterns, detect potential hazards, and improve response times to accidents. By integrating with Lombard's existing safety infrastructure, iLamp helps authorities quickly identify and address incidents, guide emergency vehicles, and manage traffic flow to prevent secondary collisions.

Pedestrian visibility is also improved, especially at crosswalks, sidewalks, and bus stops. With a mix of local drivers and out-of-town commuters in Lombard, iLamp's enhanced lighting and cameras create a safer environment for pedestrians, reducing the risk of incidents at busy intersections.

iLamp seamlessly integrates with smart city technology to manage traffic and improve road safety, making it particularly valuable in construction zones and high traffic areas.



**RELIABILITY:** Continuous stable lighting performance in all conditions.



**RESILIENCY:** Built to withstand harsh weather and environmental challenges.



**SUSTAINABILITY:** Powered by renewable energy sources for long-term environmental benefits.



**COST-EFFECTIVE:** Maximizes savings with a high return on investment and low operational costs.



**RAPID DEPLOYMENT:** Quick and easy installation, minimizing disruption to communities.



---

The modular smart streetlighting opportunity for Lombard provides an innovative solution to enhance road safety and maintain the community's low crime rate.

iLamp's Enhanced Lighting Standard certification ensures each installation can contribute to a safer environment by improving visibility, especially in high-traffic areas and during low-light or adverse weather conditions.

With Lombard's recent record of two fatal accidents and various traffic challenges from congestion, severe weather, and construction zones, iLamp's adaptive lighting and smart monitoring can play a key role in preventing accidents and fatalities.

By seamlessly integrating with Lombard's traffic monitoring and emergency response systems, iLamp helps manage traffic flow, reduce common collision risks, and ensure quicker responses to incidents, enhancing safety for both drivers and pedestrians.

A preliminary cost-benefit analysis shows that iLamp offers substantial value, potentially yielding a strong return on investment through long-term savings on accident-related costs and improved public safety.

This opportunity represents a forward-thinking investment for Lombard, aimed at sustaining its high safety standards and improving quality of life for residents and commuters alike.