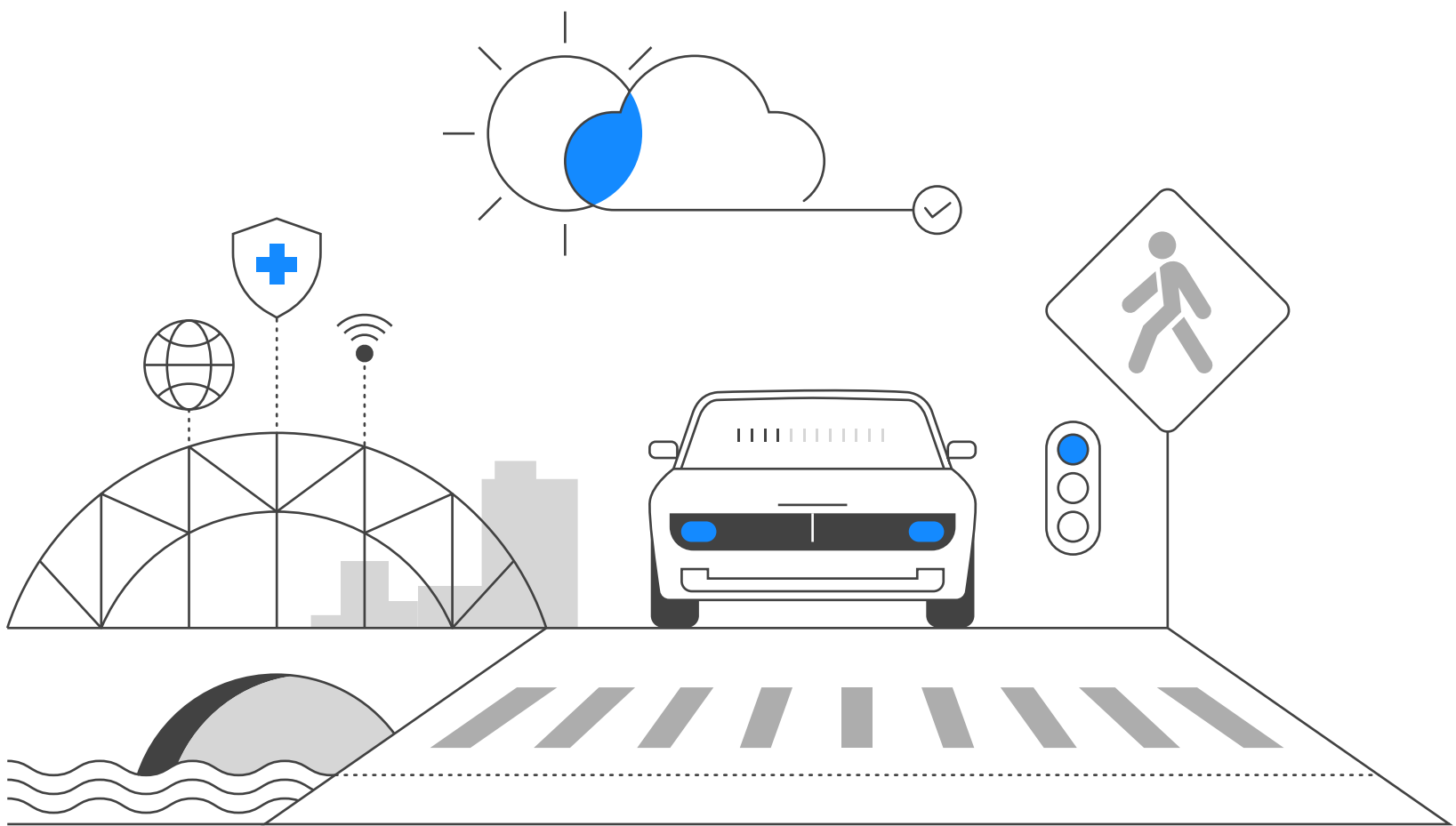




Public Security and Health



Public security and health



Road Safety & Traffic

iLamp positively impacts road safety by providing optimal lighting conditions on roads and highways. iLamp's adaptive lighting capabilities can adjust brightness according to traffic conditions, enhancing safety during peak hours and adverse weather conditions. Modular camera and communications systems can help monitor traffic, detect potential hazards, and improve response times to accidents, improving road safety and reducing traffic.



Pedestrian Safety

iLamp improves pedestrian safety by providing adequate lighting in areas such as sidewalks, crosswalks, and public transportation stops. Modular cameras can be used to monitor pedestrian movement and help identify potential hazards or security threats in real time ensuring safer pedestrian environments.



Weather Monitoring Module

Weather sensors can detect changing weather conditions, such as fog, rain, or snow, and adjust the intensity and distribution of light accordingly. This adaptability enhances visibility for drivers and pedestrians in adverse weather conditions, further improving public safety.

 **Air Quality**

Air quality monitoring can help track pollution levels in real time, allowing authorities to implement appropriate measures to limit exposure and maintain a healthy environment. By monitoring and addressing air quality concerns, iLamp contributes to improved broader public health and well being.

 **Communications**

Communication modules can both expand telecoms coverage and facilitate the transmission of critical information to the relevant authorities and emergency services in case of accidents or security incidents. creating a comprehensive and interconnected network enabling authorities to monitor and manage various aspects of urban living more effectively. This network of sensors can lead to improved decision making, more efficient use of resources, and a better understanding of the

 **Light Pollution Reduction**

The adaptive lighting capabilities of iLamp can minimize light pollution by adjusting brightness levels according to the time of day and surrounding conditions. This can contribute to a better night-time environment, reducing the impact of artificial light on wildlife and human health.

 **Integration with Existing Infrastructure**

iLamp technology can integrate with existing sensors and infrastructure, allowing for enhanced data collection and analysis. By connecting iLamp with sensors a modules facilitating parking, traffic management, telecommunications structural, UV and noise monitoring, fire, leak and flood detection, grid management and many more.

 **Public Protection**

iLamp can host smoke, gas, gunshot detection, thermal imagine and communications modules, enabling the quick detection of public safety hazards, such as wildfires, shootings, gas leaks or explosions, these can then be relayed in real time via the communication module to the relevant authorities, enabling faster, more targetted and data driven responses.